

# Shadowspec Unity

Evolution of Shade



shadowspec

A multi-canopy cantilever that mounts up to four umbrellas off just one heavy-duty mast, the Shadowspec Unity™ represents the next generation of outdoor umbrellas. It's modular design allows you to purchase additional umbrellas as your needs change, making it exceptionally versatile.





# Highlights

- > Open or close the Unity™ in 3 seconds
- > A multi-canopy outdoor cantilever umbrella
- > Marine-grade aluminium and stainless steel
- > Retractable for maximum versatility
- > Sunbrella® Marine solution-dyed fabric
- > UV & fade resistant
- > Skin Cancer Foundation's seal of approval



FABRIC WARRANTY



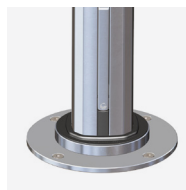
FRAME WARRANTY

# Features

**ShadowGlide™** Brilliant engineering and a clever collaboration of working parts allow the Shadowspec Serenity™ to open in one smooth motion. Use as little as 1 finger to deploy your umbrella in 3 seconds.



**ShadowLock™** The integrated wind-protection and umbrella rotation system allows for all-day protection from the elements and 360-degree rotation of the umbrellas.



**ShadowLift™** The gas-piston assisted lift allows for ease of use and removes the need for internal componentry that can break and ruin your day in the sun.

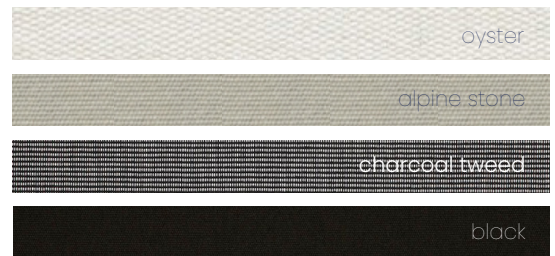


**ShadowHub™** The central hub features a built-in LED light that's easily controlled with an optional smart battery. Perfect for evening enjoyment of the outdoors.

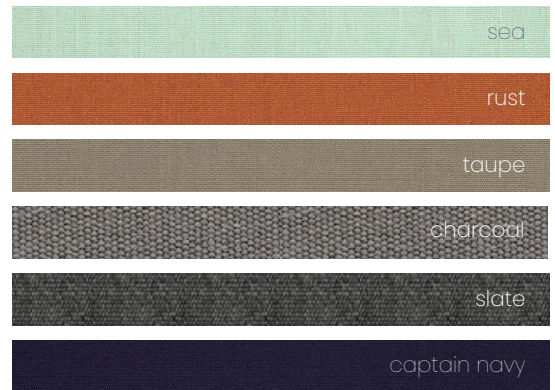


# Colour Options

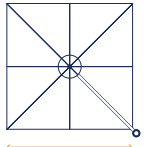
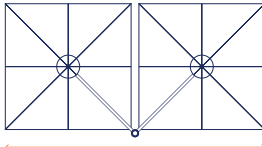
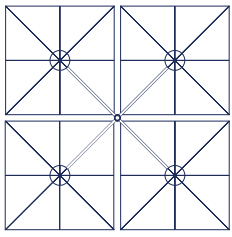
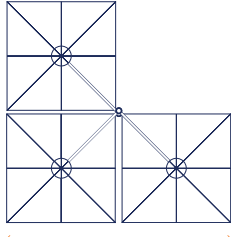
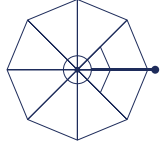
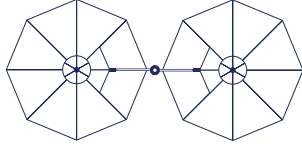
**Stock Colours**



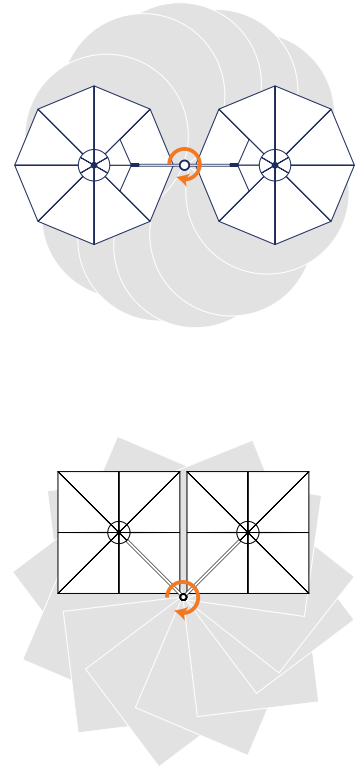
**Non-Stock Colours**




# Size & Configuration

<p><b>Square Uno</b></p>  <p>Available In 2.5m &amp; 3.0m</p>	<p><b>Square Duo</b></p>  <p>Available In 5.0m &amp; 6.0m</p>
<p><b>Square Quattro</b></p>  <p>Available In 5.0m &amp; 6.0m</p>	<p><b>Square Trio</b></p>  <p>Available In 5.0m &amp; 6.0m</p>
<p><b>Octagon Uno</b></p>  <p>Available In 3.5m &amp; 4.0m</p>	<p><b>Octagon Duo</b></p>  <p>Available In 7.0m &amp; 8.0m</p>

**Rotates 360°  
(Ground Mounted)**



# Mounting Options



**Surface Plate**

For deck, patio and concrete mounting.



**In-Ground Anchor**

For mounting with a concrete footing.



**Wall Fixing**

For when ground mounting isn't possible



**Free Standing Base**

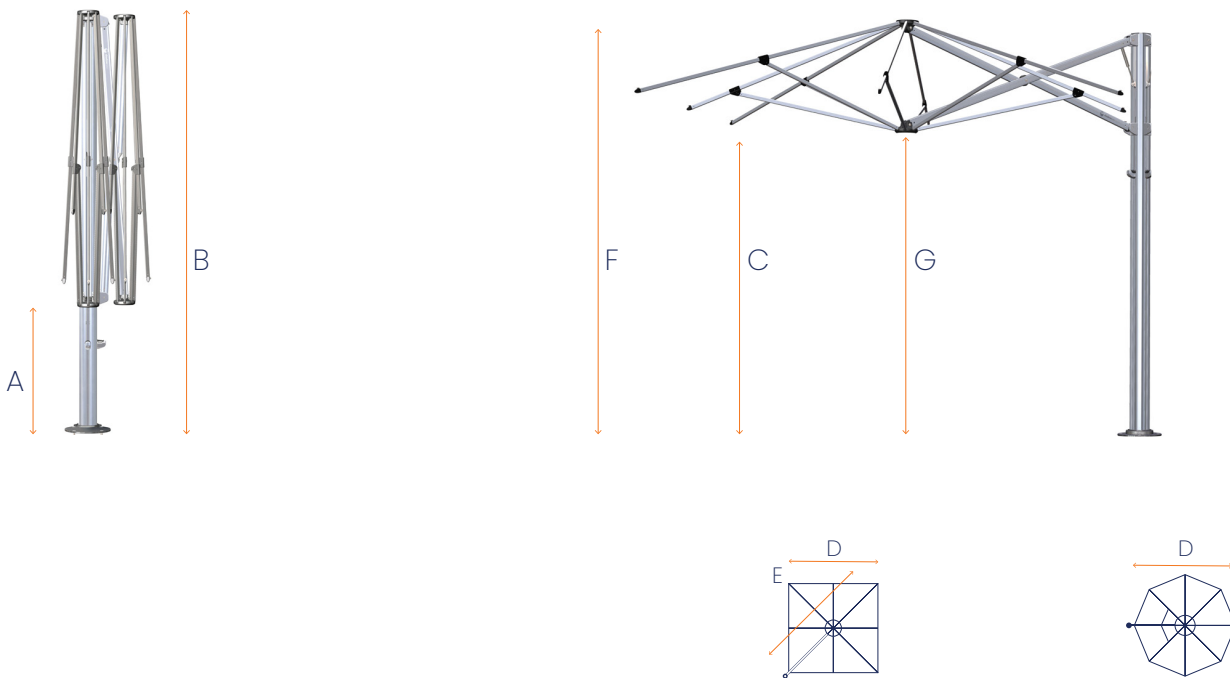
For complete customised maneuverability.  
Pavers are required for ballast and are not supplied. Optional castor wheels shown.

# About the manufacturer

New Zealand based manufacturer **Shadowspec** has been creating superior quality shade umbrellas for over 25 years. Their range includes single and multi-canopy cantilever umbrellas, tilting umbrellas, centre pole umbrellas and wall mounted umbrellas for unique spaces.



# Dimensions



## Diagram Legend (sizes are in mm)

	2.5m	3.0m	3.5m	4.0m
A	870	632	1096	848
B	2916	2916	2916	2916
C	2235	2232	2249	2190
D	2640	2967	3438	3910
E	3734	4197	N/A	N/A
F	2905	2830	2985	2908
G	2143	2066	2218	2141

\* Portable Base installations will add 165mm to these measurements.  
 Adding portable base will add a further 45-80mm. All sizings are +/- 2.5mm and subject to change without notice.

# Pricing Table

Configuration		Price with Wall Mount or Surface Plate or In-Ground Anchor	Price with Free-Standing Base + Aluminium Base Cover
<b>Uno</b> (1 x Canopy)	2.5m Square	\$4,290	\$4,690
	3.0m Square	\$4,490	\$4,890
	3.5m Octagon	\$4,290	\$4,690
	4.0m Octagon	\$4,490	\$4,890
<b>Duo</b> (2 x Canopies)	2.5m Square	\$6,790	\$7,190
	3.0m Square	\$7,190	\$7,590
	3.5m Octagon*	\$6,790	\$7,190
	4.0m Octagon*	\$7,190	\$7,590
<b>Trio</b> (3 x Canopies)	2.5m Square*	\$9,290	\$9,690
	3.0m Square*	\$9,790	\$10,190
<b>Quattro</b> (4 x Canopies)	2.5m Square*	\$11,790	\$12,190
	3.0m Square*	\$12,390	\$12,790

\* Wall mount option not available for these configurations

Accessories		
Wheels for Free-standing Base (set)		\$264.00
Rechargeable LED Light Battery (Incl Charger)		\$190.00
<b>Rain Gutter</b>		
2.5m Sq Standard Colour		\$190.00
2.5m Sq Trending / Custom Colour		\$350.00
3.0m Sq Standard Colour		\$250.00
3.0m Sq Trending / Custom Colour		\$450.00
<b>Protection Cover (Sur Last):</b>		
3.5m Oct		\$360.00
2.5m Sq   3.0m Sq   4.0m Oct	Uno	\$360.00
	Duo	\$390.00
	Trio/Quattro	\$490.00

Canopy Enhancements	Price per canopy*
Standard Colour	Included
Trend Colour	\$390.00
Custom Colour (striped)	\$490.00
Custom Colour (plain)	\$390.00

\* Additional to standard umbrella price

Mounting Options*	
Wall Mount	\$295.00
Surface Plate	\$295.00
In-Ground Anchor	\$295.00
Free-standing Base + Aluminium Base Cover	\$695.00

\* One mounting option is included as standard with each umbrella, additional ones can be purchased individually\*

Please note that prices may be changed at any time without further notice. For current pricing please visit our website or contact us using the details below.

**Contact Project Shade Today!**

We are proud to provide Australia with **the best quality** outdoor umbrellas and shade solutions. **No matter what the conditions we've got the shade for you!**

