

# Shadowspec Serenity

Precision Engineered Ambience



The Shadowspec Serenity™ is a rotating cantilever umbrella that evokes comfort and elegance in any location. Rotating 360-degrees with multiple locking positions creates an unrivaled collaboration of wind-resistance and usability. A popular choice for pools, decks and cafés, the Serenity™ represents the next generation of outdoor umbrellas.





# Highlights

- > Easy to deploy and retract in just 3 seconds
- > Marine-grade aluminium and stainless steel
- > Retractable for maximum versatility
- > Sunbrella™ Marine solution-dyed fabric
- > UV & fade resistant
- > Mould and mildew resistant
- > Skin Cancer Foundation's seal of approval



CANOPY WARRANTY



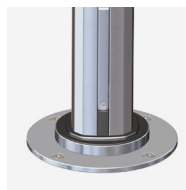
FRAME WARRANTY

# Features

**ShadowGlide™**  
Brilliant engineering and a clever collaboration of working parts allow the Shadowspec Serenity™ to open in one smooth motion. Use as little as 1 finger to deploy your umbrella in 3 seconds.



**ShadowLock™**  
The integrated wind-protection and umbrella rotation system allows for all-day protection from the elements and 360-degree rotation of the umbrellas.



**ShadowLift™**  
The gas-piston assisted lift allows for ease of use and removes the need for internal componentry that can break and ruin your day in the sun.

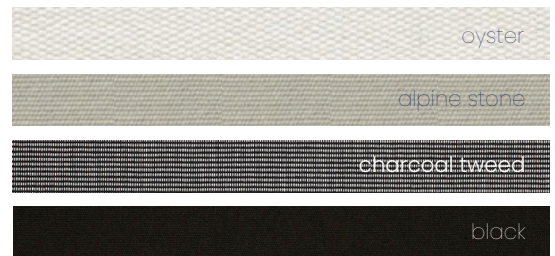


**ShadowHub™**  
The central hub features a built-in LED light that's easily controlled with an optional smart battery. Perfect for evening enjoyment of the outdoors.

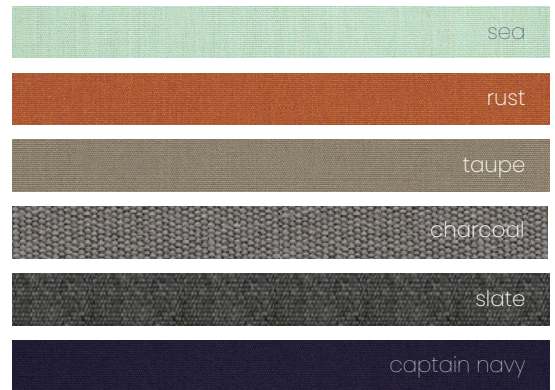


# Colour Options

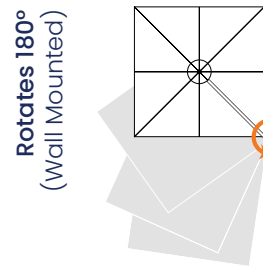
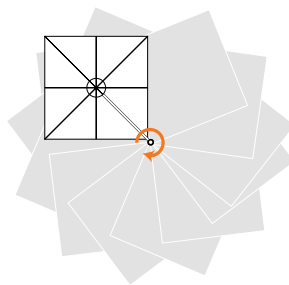
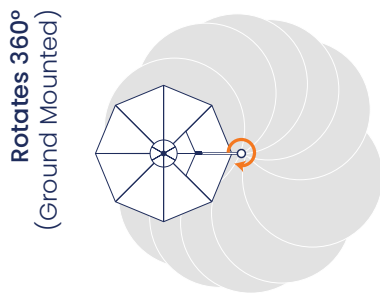
## Stock Colours



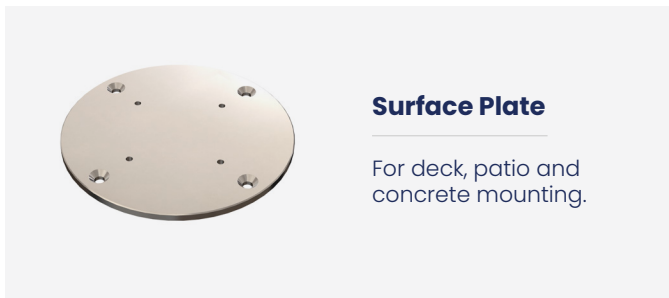
## Non-Stock Colours



# Size & Configuration



# Mounting Options

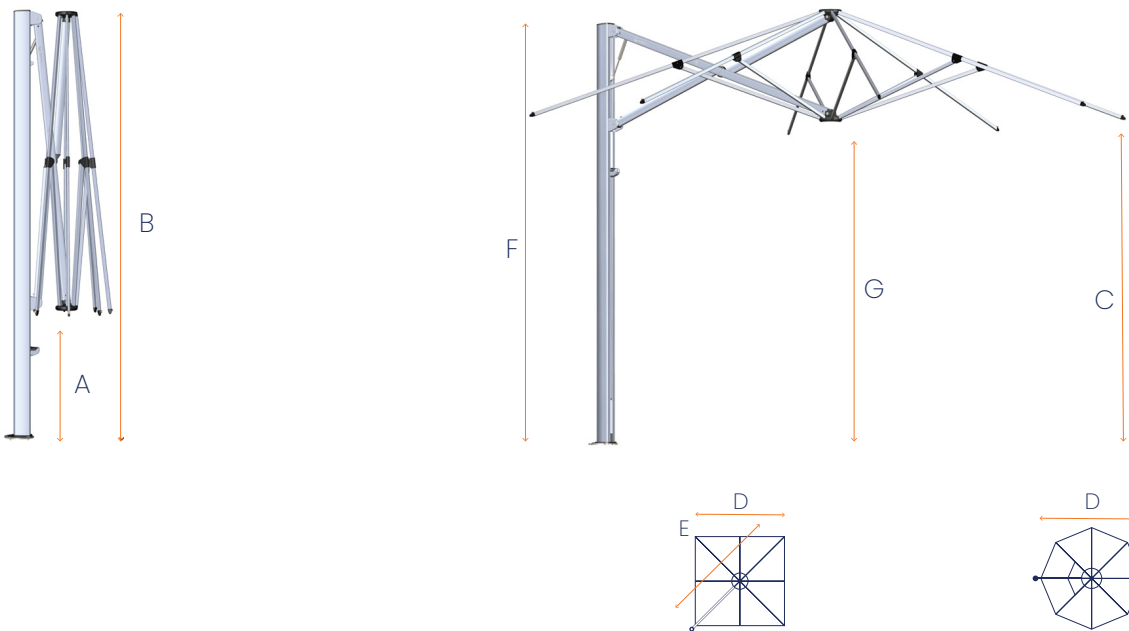


# About the manufacturer

New Zealand based manufacturer **Shadowspec** has been creating superior quality shade umbrellas for over 25 years. Their range includes single and multi-canopy cantilever umbrellas, tilting umbrellas, centre pole umbrellas and wall mounted umbrellas for unique spaces.



# Dimensions



**Diagram Legend** (sizes are in mm)

	2.5m	3.0m	3.5m	4.0m
A Ground to central frame hub when closed*	857	610	1083	835
B Height of umbrella to top of mast cap*	2900	2842	2975	2903
C Ground to lower outer edge of canopy*	2222	2219	2236	2177
D Centre of mast to outside edge of canopy	2646	2973	3447	4000
E Diagonal from centre of mast to corner	3742	4205	N/A	N/A
F Total height to top of canopy*	2908	2908	2908	2908
G Ground to central frame hub when open*	2130	2054	2205	2128

\* Portable Base installations will add 165mm to these measurements.

Adding portable base will add a further 45-80mm. All sizings are +/- 2.5mm and subject to change without notice.

# Pricing Table

Configuration	Price with Wall Mount or Surface Plate or In-Ground Anchor	Price with Free-Standing Base + Aluminium Base Cover
2.5m Square	\$3,590	\$3,990
3.0m Square	\$3,790	\$4,190
3.5m Octagon	\$3,590	\$3,990
4.0m Octagon	\$3,790	\$4,190

*Standard package includes complete umbrella and mounting option.*

Mounting Options*	
Wall Mount	\$295
Surface Plate	\$295
In-Ground Anchor	\$295
Free-standing Base + Aluminium Base Cover	\$695

*\* Note: One mounting option is included as standard with each umbrella, additional ones can be purchased individually*

Accessories	
Wheels for Free-standing Base (set)	\$264
Rechargeable LED Light Battery (Incl Charger)	\$190
Protection Cover (Sur Last) 3.5m Oct	\$360

Canopy Enhancements	Price per canopy
Standard Colour	Included
Trend Colour	\$390
Custom Colour (striped)	\$490
Custom Colour (plain)	\$390

*\* Additional to standard umbrella price*

Please note that prices may be changed at any time without further notice. For current pricing please visit our website or contact us using the details below.

**Contact Project Shade Today!**

We are proud to provide Australia with **the best quality** outdoor umbrellas and shade solutions. No matter what the conditions **we've got the shade for you!**

