

# Shadowspec SU4

T i l t i n g   C a n t i l e v e r   U m b r e l l a



shadowspec

The SU4 is an easy-to-use cantilever umbrella, designed to rotate a full 360° so you can stay protected at any time of the day.

The umbrella tilts to an almost vertical position and is engineered to provide effortless shelter for all environments. The SU4 is the perfect pool or patio partner for your home.





## Highlights

- > Marine grade aluminium frame and stainless steel frame
- > Commercial grade 100% solution dyed polyester canopy (UPF50+)
- > Umbrella rotates 360°
- > Easy to operate tilt system
- > Custom designed protective cover included



FABRIC  
WARRANTY

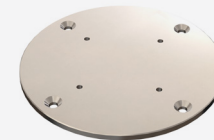


FRAME  
WARRANTY

## Colour Options

Standard Colour	egg shell white	kiwi
	boulder grey	forest green
	black widow	billiard
Non-Stock Colour	mineral	aqua
	fog	cobalt blue
	khaki	regal
	sunrise	navy
	lemon yellow	granite
	mandarin	mocha
	sunset	taupe
	circus red	vineyard
	red	berry
		chocolate
		rosewood

## Mounting Options



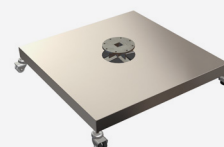
### Surface Plate

For deck, patio and concrete mounting.



### In-Ground Anchor

For mounting with a concrete footing.



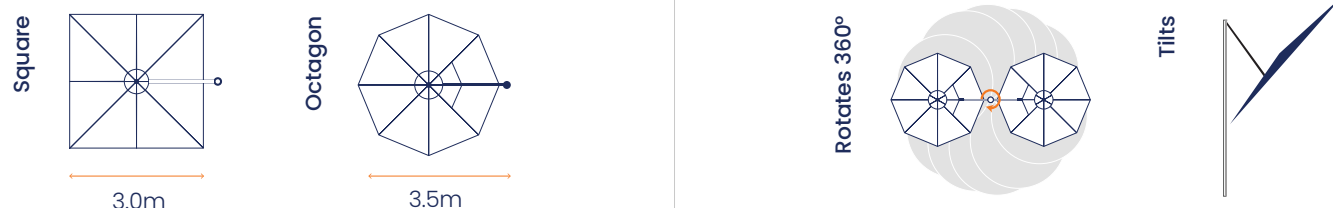
### Free Standing Base

For complete customised maneuverability.

Pavers are required for ballast and are not supplied. Optional castor wheels shown.



# Size & Configuration



# Dimensions



## Diagram Legend (sizes are in mm)

- A Clearance of Closed Strut Arms\*
- B Depth of Umbrella When Closed
- C Overall Height\*
- D Height to Edge of Canopy\*
- E Height to Centre Hub\*
- F Handle Height\*
- G Canopy Width
- H Centre of Mast to Outside Edge of Canopy

## 3.5m Octagon

880  
450  
2723  
2125  
2065  
940  
3480  
3595

## 3.0m Square

880  
450  
2723  
2125  
2065  
940  
3000  
3595

\* Note: All measurements are rounded and are subject to change. Adding portable base wheels also will add a further 45-80mm

# About the manufacturer

New Zealand based manufacturer **Shadowspec** has been creating superior quality shade umbrellas for over 25 years. Their range includes single and multi-canopy cantilever umbrellas, tilting umbrellas, centre pole umbrellas and wall mounted umbrellas for unique spaces.



# Pricing Table

Configuration	Price with Wall Mount or Surface Plate or In-Ground Anchor	Price with Free Standing Base + Aluminium Base Cover
3.0m Square	\$2,690	\$2,787
3.5m Octagon	\$2,590	\$2,887

*Standard package includes complete umbrella, one mounting option and a protection cover.*

Additional Mounting Options*	
Surface Plate	\$121.00
In-Ground Anchor	\$121.00
Free Standing Base + Aluminium Base Cover	\$695.00

*\* Note: One mounting option is included as standard with each umbrella, additional ones can be purchased individually*

Canopy Enhancements	Price per canopy
Standard Colour	Included
Trending/Custom Colour (plain)*	\$275.00
Custom Colour (striped)*	\$1,529.00

*\* Additional to standard umbrella price*

Accessories	
Wheels for Free-standing Base (set)	\$264.00
Stainless Steel Portable Base Cover	\$979.00

Please note that prices may be changed at any time without further notice. For current pricing please visit our website or contact us using the details below.

**Contact  
Project Shade  
Today!**

We are proud to provide Australia with **the best quality** outdoor umbrellas and shade solutions. No matter what the conditions **we've got the shade for you!**

