

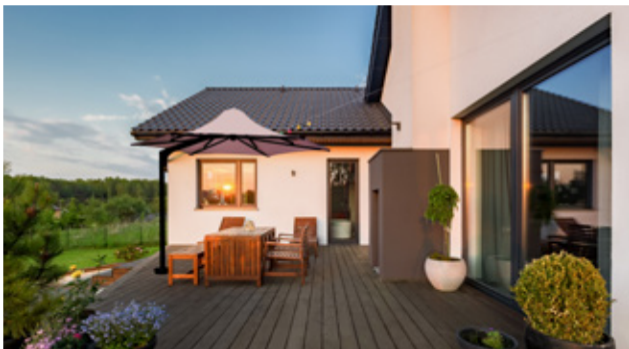
Flexshade Hexagonal Cantilever

Architecturally Designed & Built To Last



The Flexshade Hexagonal Cantilever is a tension membrane side post umbrella engineered with structural integrity front of mind. The canopy has a hexagonal shape which gives it a round appearance similar to a traditional umbrella. Designed and wind rated for the even toughest conditions providing a lifetime of low maintenance, these permanent structures are custom made when you order.





Highlights

- > Certified engineered non retractable design
- > Tensioned PVC fully welded membranes
- > Zinc & powder coated steel frames
- > Marine grade stainless cables & fittings
- > Engineered for winds up to 160km/h
- > Fire rated PVC with PVDF top finish



FABRIC
WARRANTY



FRAME
WARRANTY

Membrane Colour Options

bright white	dutch green
nature	laguna blue
pearl white	blue
beige	royal blue
brilliant yellow	bright grey
flame red	dust grey
burgundy	charcoal
chocolate	black

Colour swatches are approximate.

Options

- > Full range of Dulux RAL powder coat colours for frame
- > Electropolished stainless steel frames
- > Provision for electric lighting and heating units
- > Pivoting mechanism

Features

Structural Base Plate

Heavy duty base plate permanently anchored to foundation



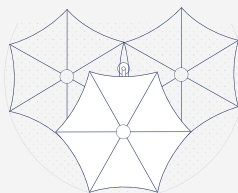
Stainless Steel Tension Adjuster

Maintains tension on membrane for years to come



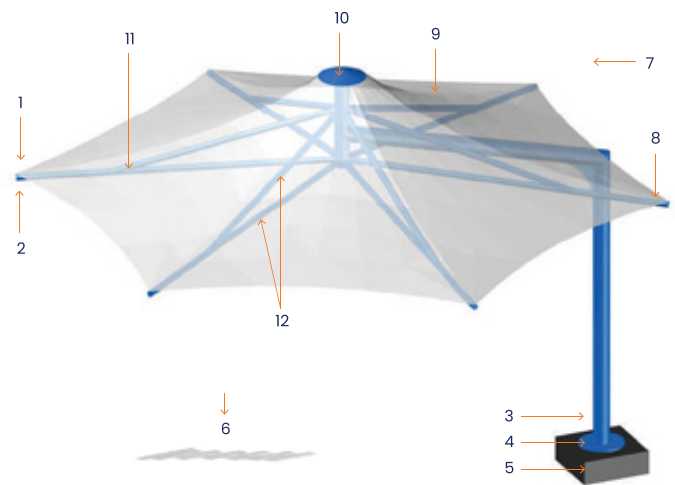
Pivoting Mechanism (optional)

Allows umbrella to rotate

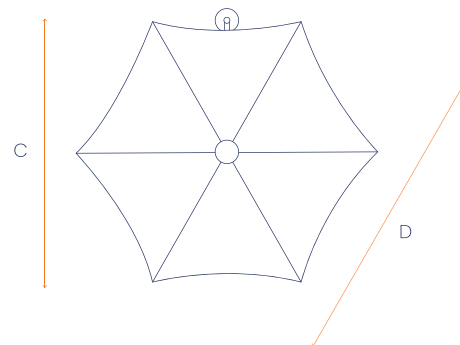
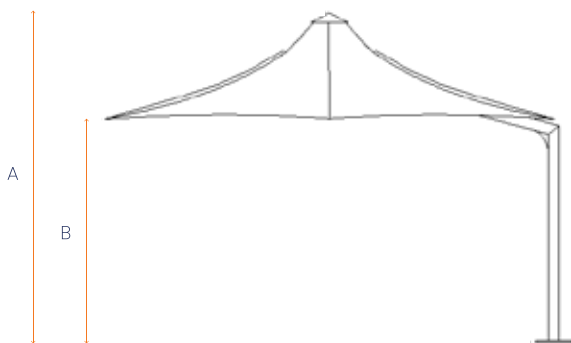


Configuration

- | | |
|--|--|
| 1. Corner Plate
Powder coated aluminium | 8. Point Load
1 kN (225 lbf) |
| 2. Tension Adjustor
Stainless steel | 9. Membrane
Fire rated PVC with PVDF top finish |
| 3. Column
Zinc & powder coated | 10. Apex Cap
Powder coated aluminium |
| 4. Baseplate | 11. Frame Bolts
Stainless steel |
| 5. Footings
To suit local conditions | 12. Upper & Lower Arms
Zinc & powder coated |
| 6. Ground Snow Load
0.95 kPa (20 psf) | |
| 7. Wind Load
45 m/sec | |



Dimensions



Dimensions (sizes are in mm)					Shipping	
Type	A	B	C	D	Dimensions	Weight
Hexagonal 3.6m	3100	2400	3120	3600	3010 x 420 x 475	141 kg
Hexagonal 4.9m	3390	2400	4200	4850	3010 x 420 x 475	188 kg
Hexagonal 5.8m	3665	2400	5020	5800	3010 x 420 x 475	350 kg

The Flexshade® Hexagonal Cantilever can be designed to suit specific customer requirements for height and plan dimension.

About the manufacturer

The Flexshade® range of pre-engineered tension membrane structures are part of the Vesl Tension Span Group founded in 1977. These Australian made shade structures are built to unmatched standards and are designed with a fix and forget philosophy.

