

Shadowspec **Serenity**

P r e c i s i o n E n g i n e e r e d A m b i e n c e



The Shadowspec Serenity™ is a rotating cantilever umbrella that evokes comfort and elegance in any location. Rotating 360-degrees with multiple locking positions give an unrivalled collaboration of wind-resistance and useability. A popular choice for pools, decks and cafes.





Highlights

- > Easy to deploy and retract in just 3 seconds
- > Marine-grade aluminium and stainless steel
- > Retractable for maximum versatility
- > Sunbrella™ Marine solution-dyed fabric
- > UV & fade resistant
- > Mould and mildew resistant
- > Skin Cancer Foundation's seal of approval



CANOPY
WARRANTY



FRAME
WARRANTY

Features

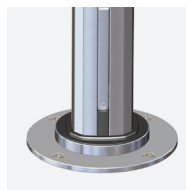
ShadowGlide™

Brilliant engineering and a clever collaboration of working parts allow the Shadowspec Serenity™ to open in one smooth motion. Use as little as 1 finger to deploy your umbrella in 3 seconds.



ShadowLock™

The integrated wind-protection and umbrella rotation system allows for all-day protection from the elements and 360-degree rotation of the umbrellas.



ShadowLift™

The gas-piston assisted lift allows for ease of use and removes the need for internal componentry that can break and ruin your day in the sun.



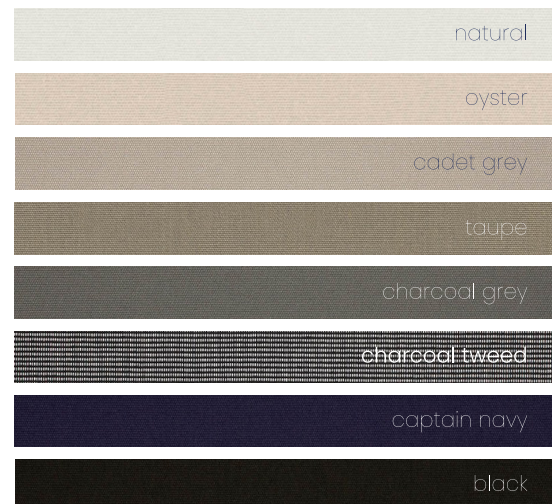
ShadowHub

The central hub features a built-in LED light that's easily controlled with an optional smart battery. Perfect for evening enjoyment of the outdoors.



Colour Options

Stock Colour



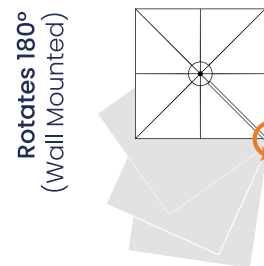
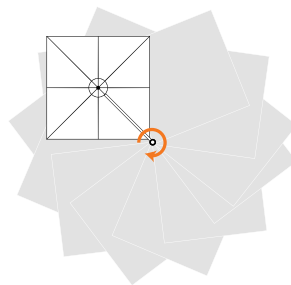
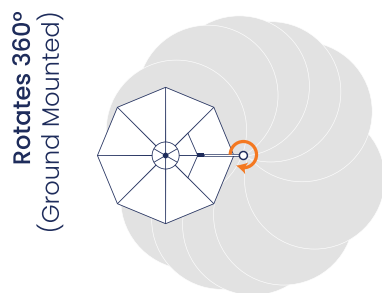
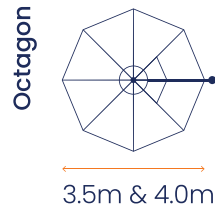
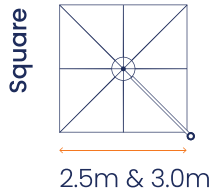
Full Sunbrella range is available as a custom, non-stock colour option.

Trend Summer

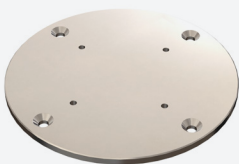


Trend colours are non-stock and lead times may vary for non-stock colours.

Size & Configuration

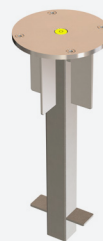


Mounting Options



Surface Plate

For deck, patio and concrete mounting.



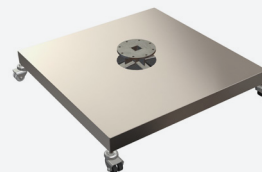
In-Ground Anchor

For mounting with a concrete footing.



Wall Fixing

For when ground mounting isn't possible



Free Standing Base

For complete customised maneuverability.

Pavers are required for ballast and are not supplied. Optional castor wheels shown.

About the manufacturer

New Zealand based manufacturer **Shadowspec** has been creating superior quality shade umbrellas for over 25 years. Their range includes single and multi-canopy cantilever umbrellas, tilting umbrellas, centre pole umbrellas and wall mounted umbrellas for unique spaces.



Dimensions

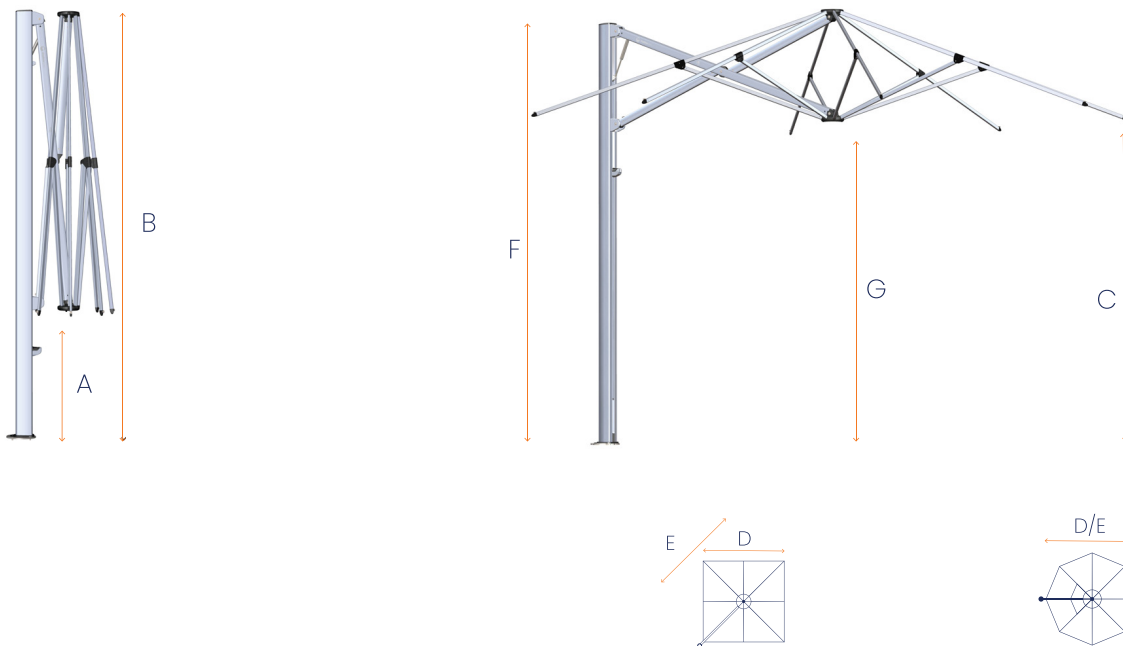


Diagram Legend (sizes are in mm)

	2.5m	3.0m	3.5m	4.0m
A Ground to central frame hub when closed*	857	610	1083	835
B Height of umbrella to top of mast cap*	2903	2903	2903	2903
C Ground to lower outer edge of canopy*	2222	2219	2236	2177
D Centre of mast to outside edge of canopy	2665	2993	3500	4000
E Diagonal from centre of mast to corner	3639	4101	3473	3950
F Total height to top of canopy*	2892	2817	2972	2895
G Ground to central frame hub when open*	2150	2071	2226	2149

* Portable Base installations will add 165mm to these measurements.

Adding portable base will add a further 45-80mm. All sizings are +/- 2.5mm and subject to change without notice.

Pricing Table

Configuration	with Wall Mount or Surface Plate or In-Ground Anchor	with Free-Standing Base + Aluminium Base Cover
2.5m Square	\$3,290.00	\$3,690.00
3.0m Square	\$3,490.00	\$3,890.00
3.5m Octagon	\$3,290.00	\$3,690.00
4.0m Octagon	\$3,490.00	\$3,890.00
Standard package includes complete umbrella and mounting option.		

Mounting Options*	
Wall Mount	\$295.00
Surface Plate	\$295.00
In-Ground Anchor	\$295.00
Free-standing Base + Aluminium Portable Base Cover	\$695.00
Note: One mounting option is included as standard with each umbrella, additional ones can be purchased individually*	

Accessories	
Wheels for Free-standing Base (set)	\$264.00
Rechargeable LED Light Battery (Incl Charger)	\$190.00
Protection Cover (Sur Last):	
3.5m Oct	\$360.00
2.5m Sq 3.0m Sq 4.0m Oct	\$360.00

Canopy Enhancements	Price per canopy
Standard Colour	Included
Trending/Custom Colour (plain)*	\$390.00
Custom Colour (striped)*	\$490.00
Additional to standard umbrella price	

Please note that prices may be changed at any time without further notice. For current pricing please visit our website or contact us using the details below.

**Contact
Project Shade
Today!**

We are proud to provide Australia with **the best quality** outdoor umbrellas and shade solutions.
No matter what the conditions **we've got the shade for you!**

